



Collaborative for
Public Health Research



University of California
San Francisco

Public Health for All Californians Together (PHACT) Coalition

Virtual November Meeting
November 14, 2025



Overview

- 1 CDPH Update**
- 2 Infectious Disease & Immunization Update**
- 3 Coalition Survey Results**
- 4 Working Group Updates & Next Steps**

Today's Speakers

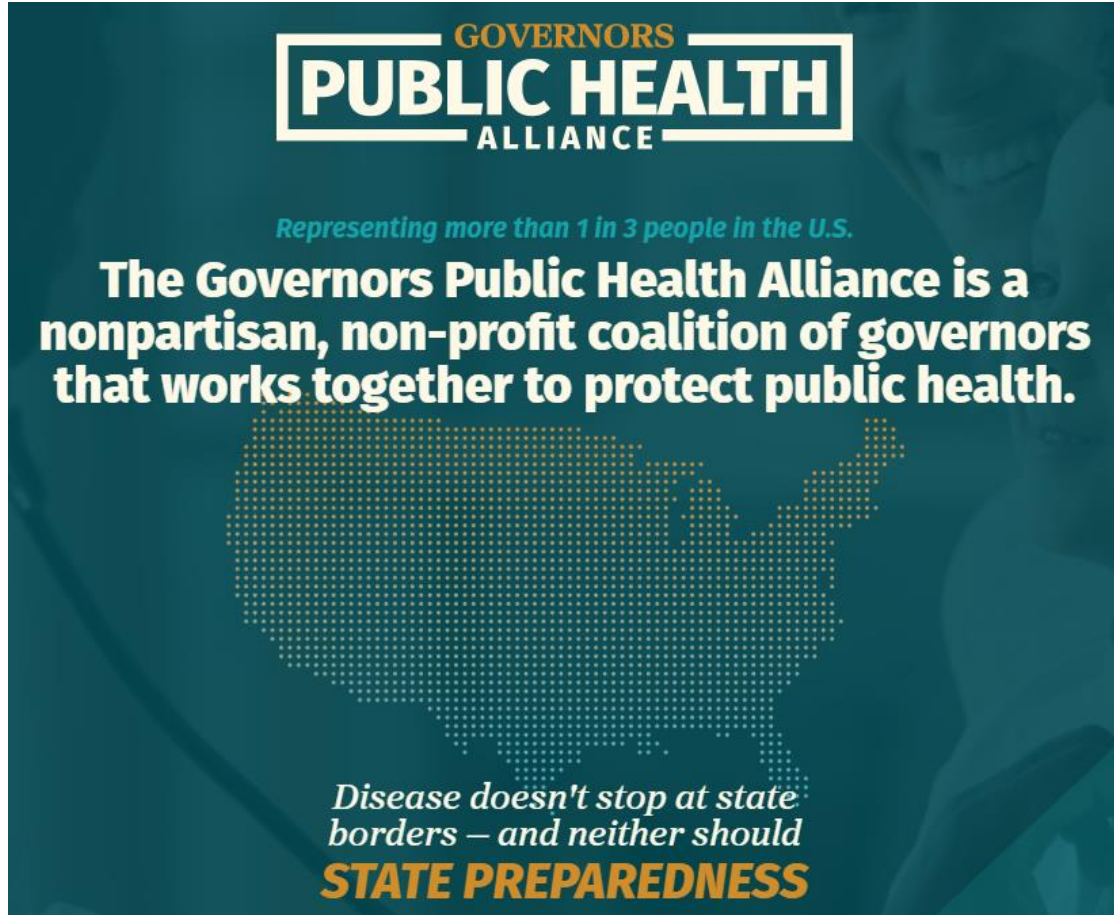
- **Dr. Erica Pan**, State Health Officer & Director of California Department of Public Health
- **Dr. Eric Sergienko**, CDPH Chief of Division of Communicable Disease Control
- **Dr. Rob Schechter**, CDPH Immunization Branch Chief; recently terminated ACIP member
- **Dr. Priya Shete**, UCSF Physician-Scientist & Principal Investigator, CPR3

CDPH Director Update

California Leadership & Coordination

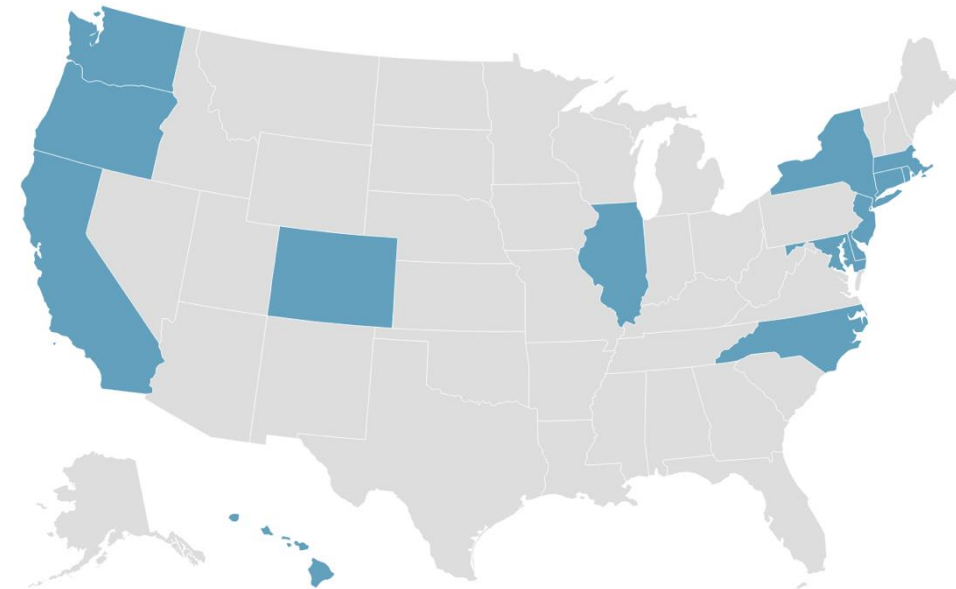
- **National:** [Governors Public Health Alliance](#) – 15 states
- **Regional:** West Coast Health Alliance – HI, WA, OR, CA
- **California:** PHACT Coalition
- Updated CA laws protecting evidence-based recommendations, access, and coverage: [Public Health for All](#) website





14 States + Guam

- Strengthen emergency preparedness
- Share data and expertise
- Enhance cross-collaboration
- Serve a forum to discuss best practices and common challenges



As of Oct. 16

Map: Post-Gazette • Source: Governors Public Health Alliance • Created with Datawrapper

West Coast Health Alliance: CA, HI, OR & WA



Respond to threats to national public health policy and recommendations



Review data, information, and reports from credible clinical and scientific professional organizations that use evidence-based methodologies and source materials to assess changes in public health policy



Develop unified public health position statements, policy recommendations and guidance regionally



Address communications needs and countering mis- and dis-information

Public Health News

California Alerted CDC of Multistate Infant Botulism Outbreak

- CDPH identified an increase in requests for BabyBIG, the only FDA-approved treatment for infant botulism
- Testing by CDPH lab suggests the presence of the bacterium that causes botulism in infant formula
- 23 cases have been identified in 13 states
- ByHeart recalled formula – consumers should stop using immediately

The screenshot shows the CDPH (California Department of Public Health) website. At the top is the CDPH logo and navigation links: 'I am looking for', 'I am a', 'Programs', and 'A-Z Index'. Below the navigation is a blue banner for the 'OFFICE OF COMMUNICATIONS'. The main content area features the title 'California Alerted CDC of Multistate Infant Botulism Outbreak Linked to ByHeart Infant Formula' with a date of November 8, 2025, and a reference code NR25-17. A sub-header reads 'CDPH's Infant Botulism Treatment and Prevention Program Noted Case Increase, Launching National Investigation'. A 'What You Need to Know' section states that CDPH is working with other state health departments on an outbreak of infant botulism linked to the company. Below this is a section titled 'Outbreak Investigation of Infant Botulism: Infant Formula (November 2025)' with a warning: 'Do not use recalled ByHeart Whole Nutrition Infant Formula. FDA's Investigation is ongoing.' The 'Product' section explains that all ByHeart Whole Nutrition Infant Formula products have been recalled, including all unexpired lots of formula cans and single-serve 'anywhere' sticks. It also mentions that the FDA is expanding its recommendation to include all ByHeart infant formula products due to the number of ill infants reported. A small image of a ByHeart formula can is shown with the caption 'Additional Product Images'. The bottom of the page notes that ByHeart infant formula products make up less than 1% of all infant formula sold in the United States and that this outbreak does not create shortage concerns for parents and caregivers.



Infectious Disease and Vaccine Coverage Report

Stay Up to Date with CDPH Dashboards

Data can inform preparedness, guidance, policy, and clinical decisions

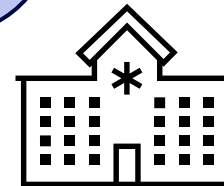
CDPH Division of Communicable Disease Control

[CDPH Respiratory Virus
Surveillance Dashboard](#)

[CDPH Cal-SuWers
Wastewater Surveillance
Dashboard](#)

[CalCAT Dashboard](#)

Clinicians can
use dashboards
to help answer
epidemiologic
questions



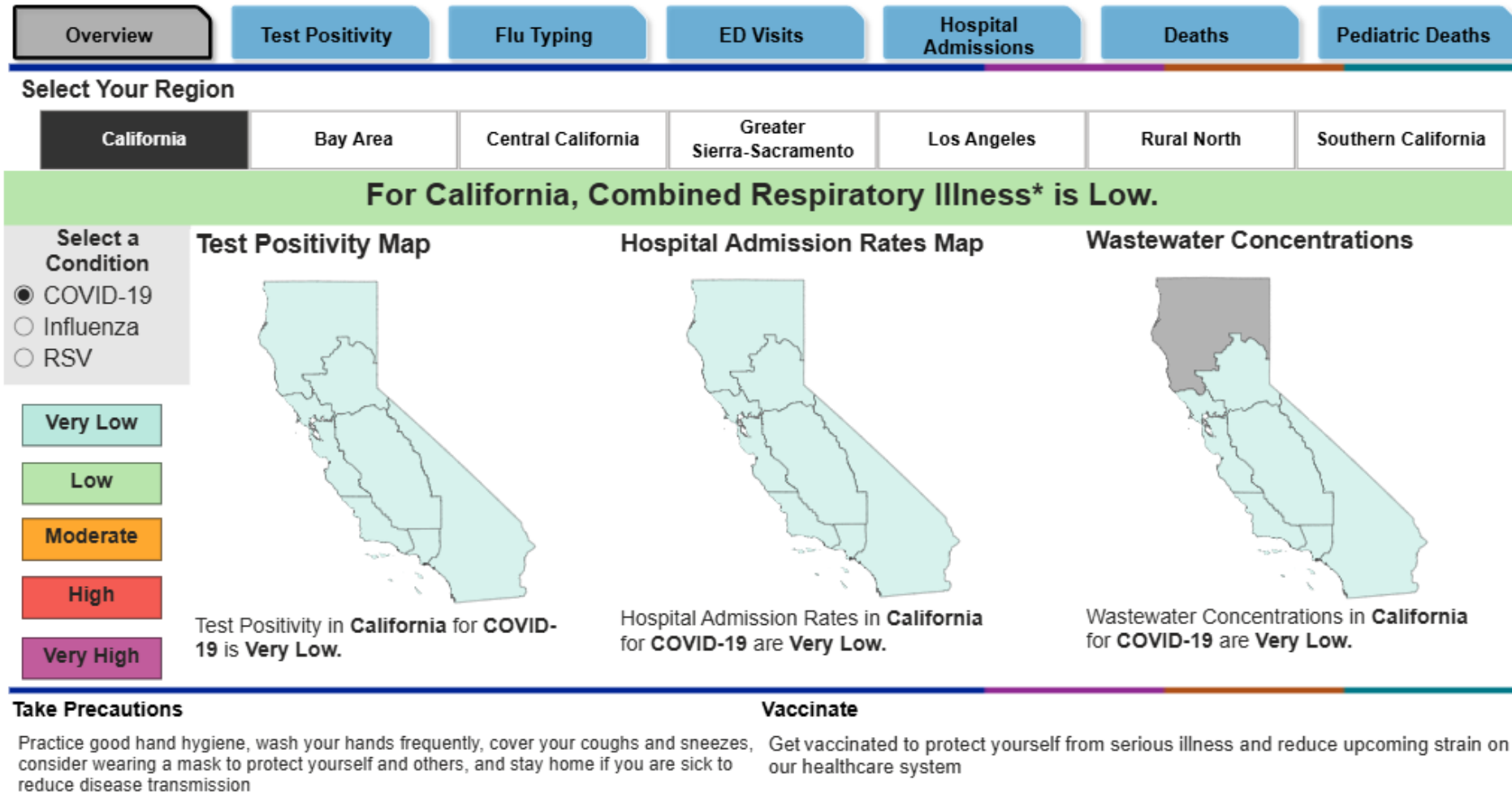
Where are we in the current
resp season? Is it worse
than in previous years?

Is it getting better or worse?

Are people getting sick
enough to seek treatment?

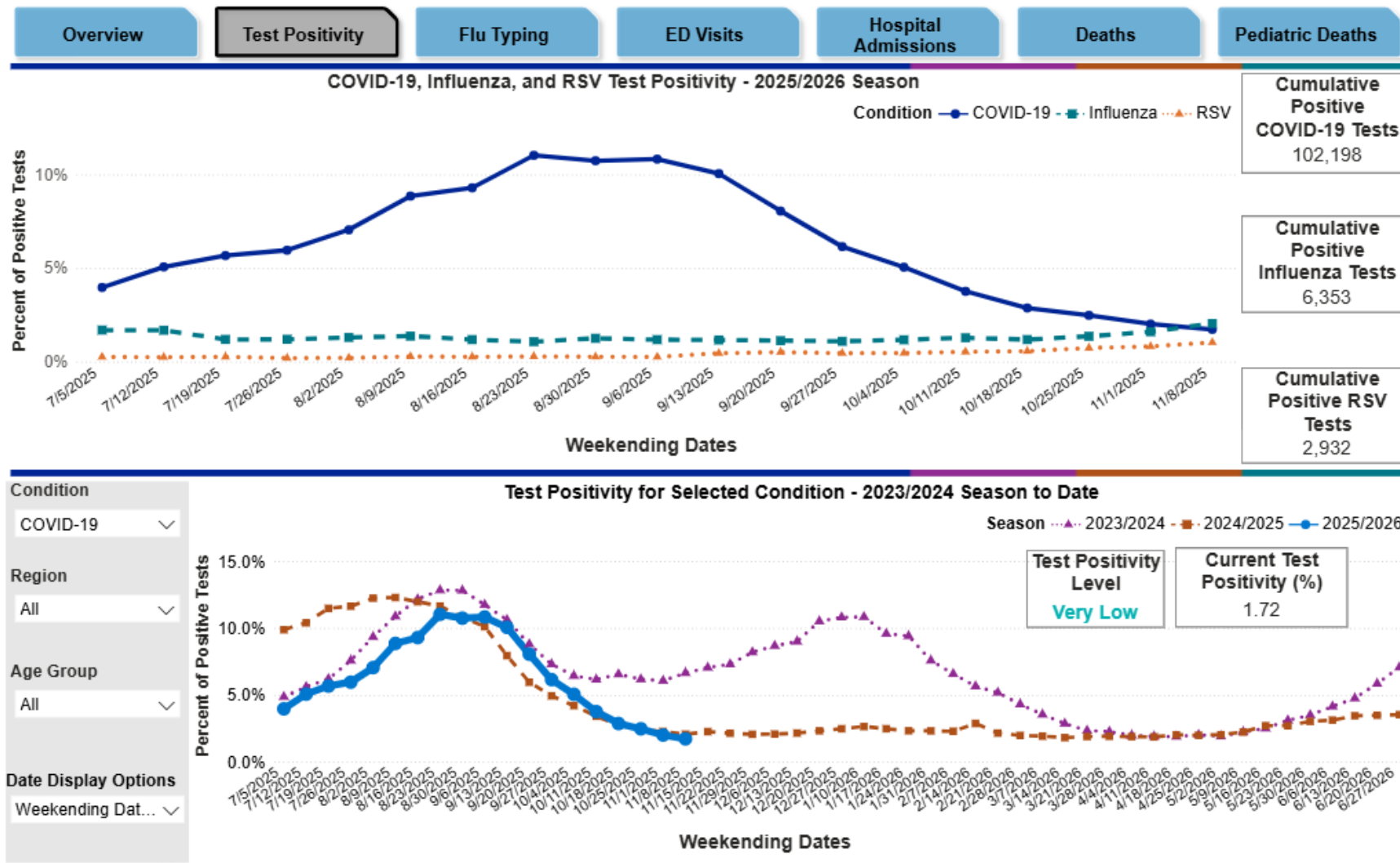
Are people being
hospitalized?

Find the Latest Data on Respiratory Illness

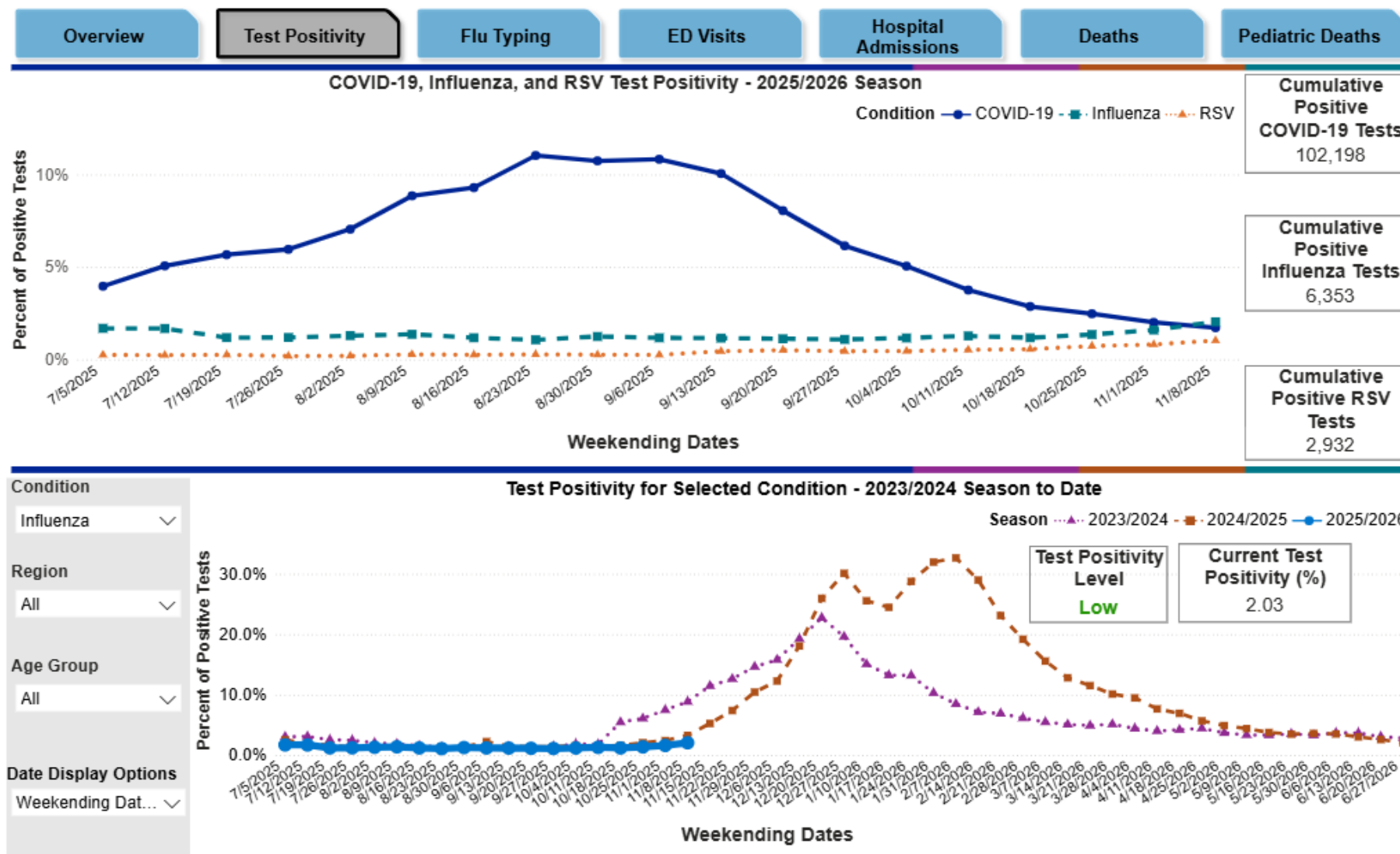


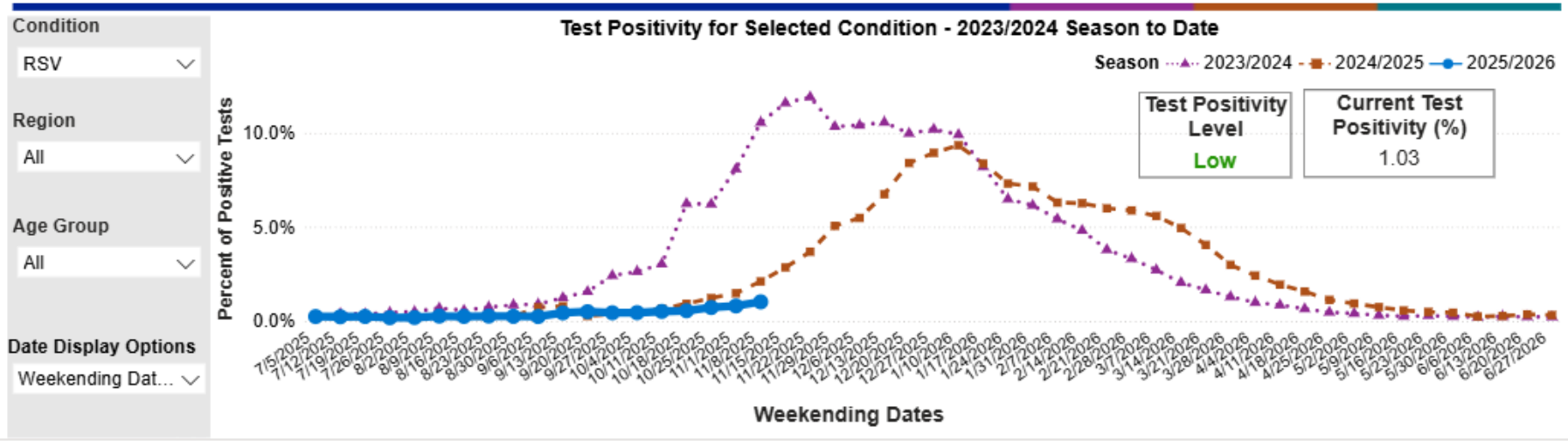
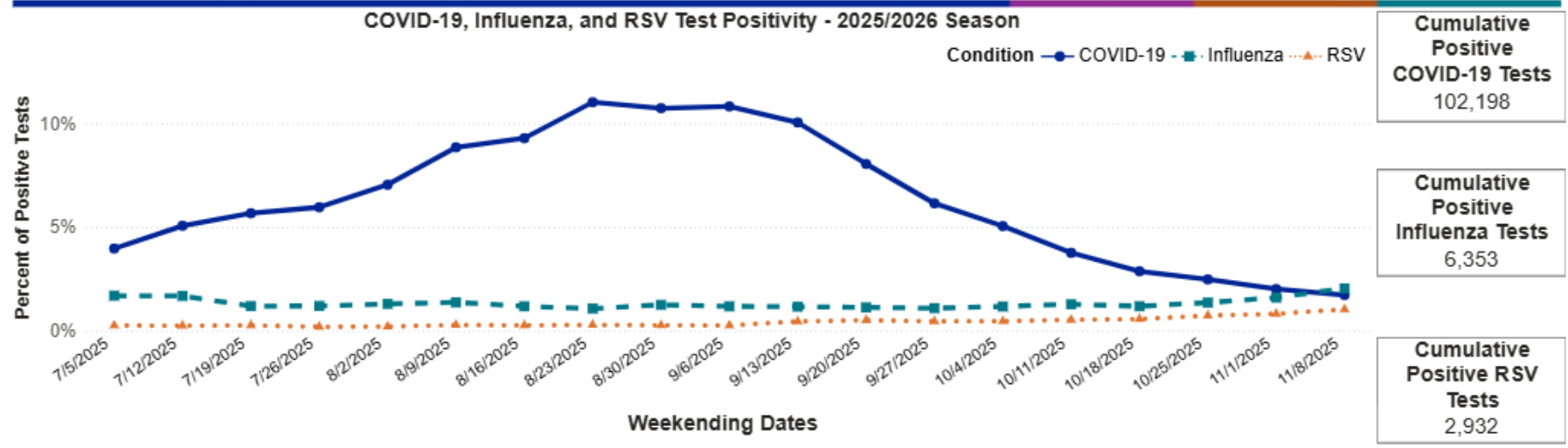
Respiratory virus cases in prior months were largely due to COVID-19 infection

COVID-19 for 2025/2026 thus far generally mirrors 2024/2025

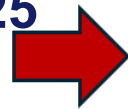


Flu for 2025/2026 thus far generally mirrors 2024/2025





RSV for 2025/2026 thus far generally mirrors 2024/2025



Current and Predicted COVID-19 Hospitalizations

Short-term COVID-19 Forecasts in California

Short-term forecasts take into account the most recent trends in COVID-19 hospitalizations, hospital admissions, ICU patients, and apply statistical models to that data to generate anticipated trends in the coming 2-4 weeks. With the volume and pace of COVID-19 data generation, we cannot always guarantee models or ensemble estimates will not contain unexpected results.

State

Regions

Current Hospital Admits:

339

Actuals: 2025-11-08

Projected Total:

592

95% CI : 235 - 1414

Ensemble Forecast for week ending on 2025-11-29

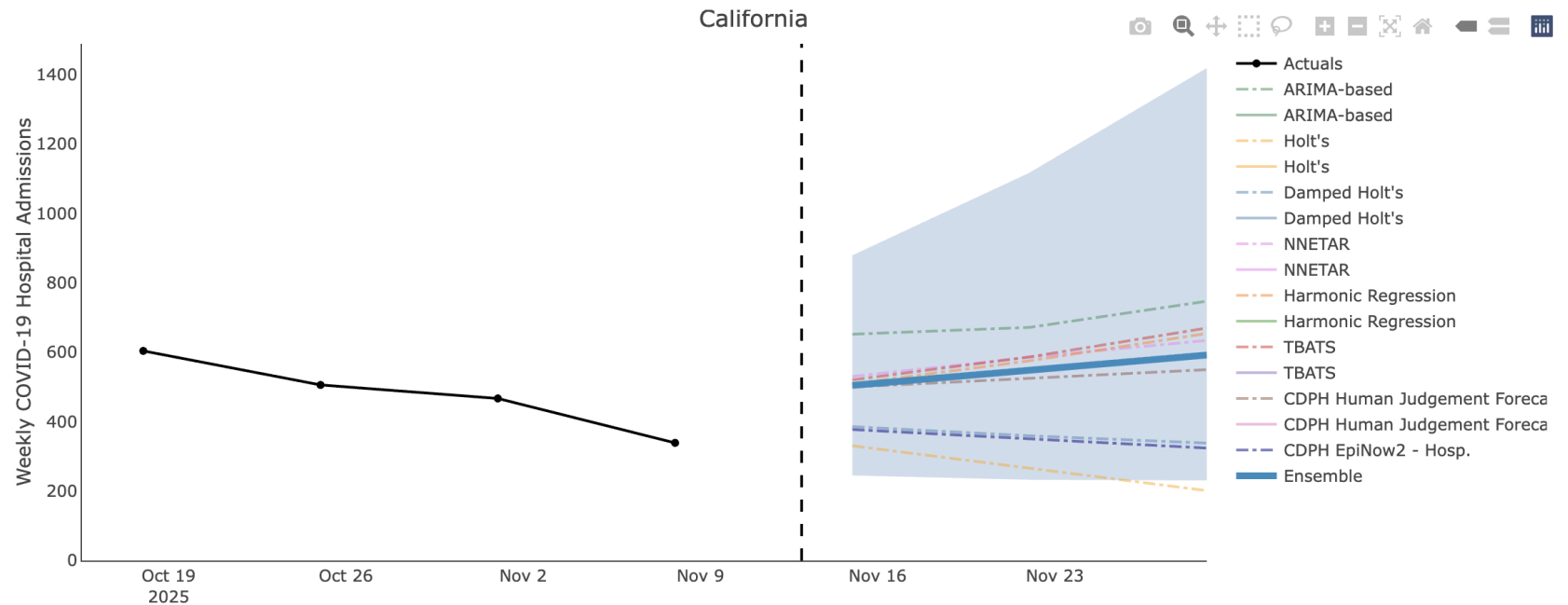
Plot Options:

Show 95% CI ☒

Download Hospital Admits Forecasts

Statewide Admits Forecasts

The black box (left) represents the current number of COVID-19 hospital admissions in California.



2025-2026 Influenza, RSV immunization in California: CAIR data

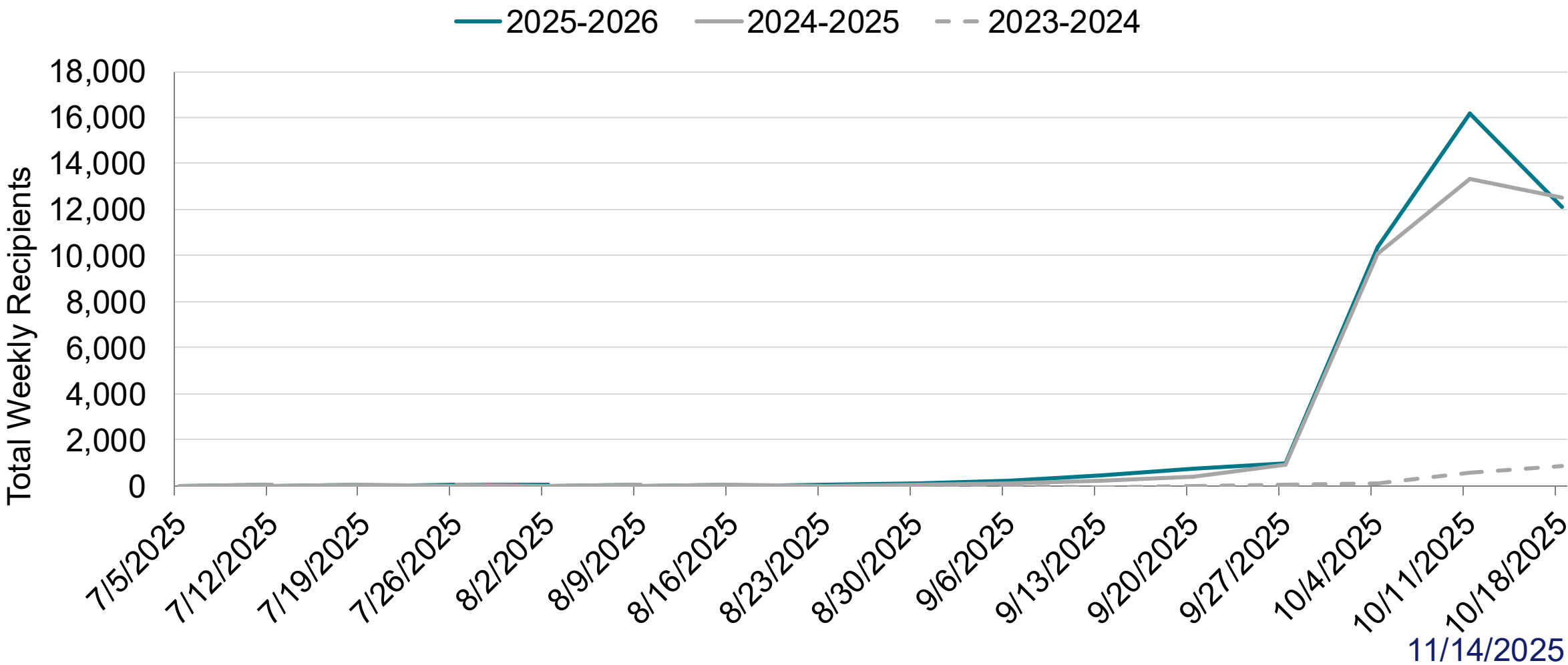
Influenza vaccine

- Doses to date: 96% of 2024-2025 volume
- Projected end-of-season coverage:
 - 45% for ages 6 months and older
 - 70% for ages 65 years and older

Pre- or post-natal RSV Immunization to protect infants

- 30→35% of eligible infants protected, compared to 2024-2025
- Projected end-of-season coverage: ~60%?
- Cost concerns limiting stocking of antibody at birth hospitals

Infants Receiving RSV Antibody by Season: CAIR



Total CA Population

Percent of Up to Date Persons by County of Residence

County

Age Group

Statewide

(All)

2,579,461

Up to Date Recipients

6.6%

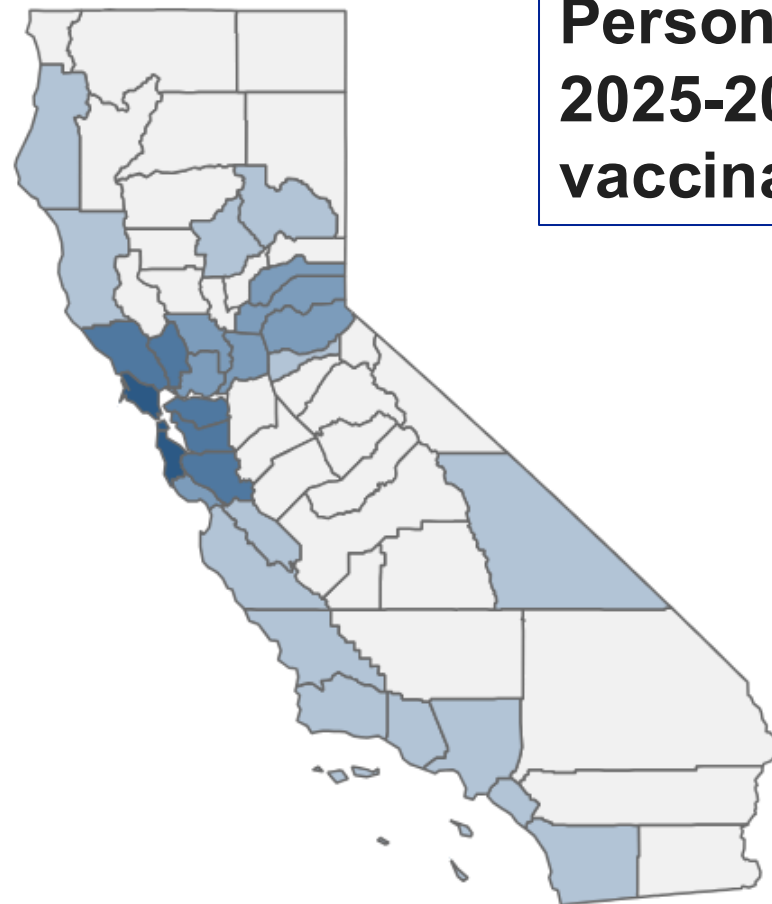
of California Population

106,449,237

Total Doses Administered

See [Data Dictionary](#) for Details.

**Persons up-to-date with
2025-2026 COVID-19
vaccination**



1.5% 18.2%

Data: 11/2/2025 11:59pm | Posted: 11/3/2025

<https://www.cdph.ca.gov/Programs/CID/DCDC/Pages/COVID-Vaccine-Data.aspx>

11/14/2025

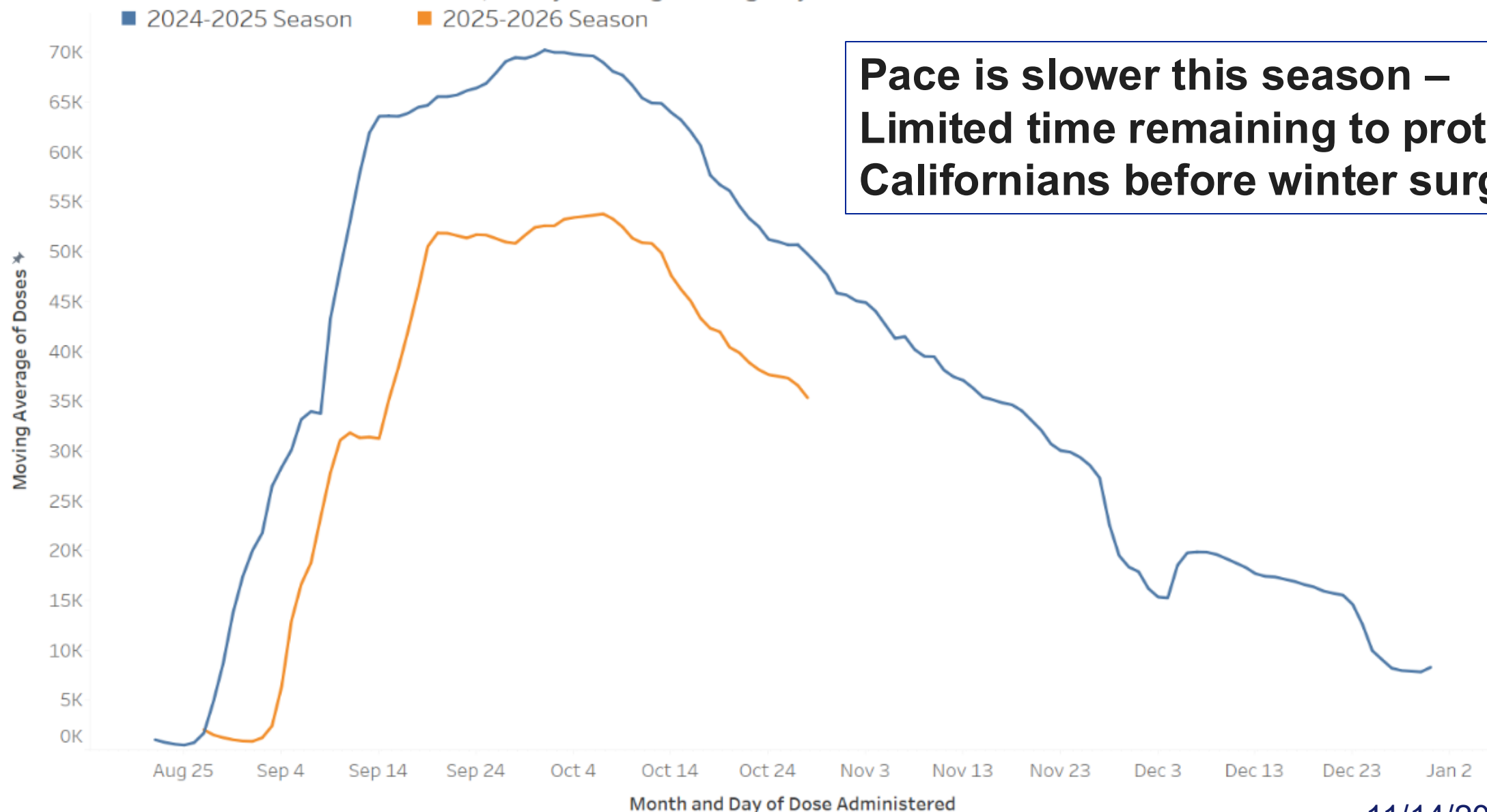
1+ Current Doses of COVID-19 Vaccine, California

Coverage even lower so far this year; ongoing wide age gradient

Age, Years	11/2/2024	11/2/2025
< 5	1%	2%
5-11	3%	2%
12-17	3%	2%
18-49	5%	4%
50-64	11%	7%
65+	27%	20%

11/14/2025

COVID-19 Vaccine Doses Administered, 7-day Moving Average by Season



**Pace is slower this season –
Limited time remaining to protect
Californians before winter surge**

11/14/2025

Fewer Providers Giving COVID-19 Vaccine Ages 18 Years and Older

Vaccine	Season	# of Provider Sites Reporting Doses in CAIR	% of Doses in CAIR Given at Pharmacies
COVID-19	2024-25	7,700	52%
	2025-26, to date	6,100 ↓↓	59% ↑
Influenza	2024-25	11,900	38%
	2025-26, to date	11,300	39%

11/14/2025

Fewer Providers Giving COVID-19 Vaccine

Ages Younger Than 3 Years

Vaccine	Season	# of Provider Sites Reporting Doses in CAIR	% of Doses in CAIR Given at Pharmacies
COVID-19	2024-25	1,900	<2%
	2025-26, to date	1,100 ↓↓	<2% =
Influenza	2024-25	4,400	<2%
	2025-26, to date	4,500	<2%

Pharmacies are an option at older ages, but not any time soon for younger children

11/14/2025

Advisory Committee on Immunization Practices

Meeting December 4 – 5, 2025: Preliminary agenda

- Hepatitis B vaccines (Possible Vote & VFC vote)
- Childhood and adolescent immunization schedule
- Vaccine Safety

[ACIP Meeting Information](#) | [Agenda: TBD](#) | [ACIP Recent Meeting Recommendations](#)

11/14/2025

CDPH Vaccines For All [web page](#)

Recommendations guiding California laws (AB 144)

CDPH Immunization Recommendations

[Flu, RSV,
COVID-19](#)

[MMRV](#)

[Hepatitis B](#)

[Resources](#)

Routine Immunization Schedule

Children and adolescents through age 18 years: CDPH recommends immunization of children and adolescents in accordance with the [American Academy of Pediatrics immunization schedule \(PDF\)](#) (version September 17, 2025).

Adults age 19 years and older: CDPH recommends immunization of adults in accordance with the [American Academy of Family Physicians immunization schedule \(PDF\)](#) (version August 28, 2025).

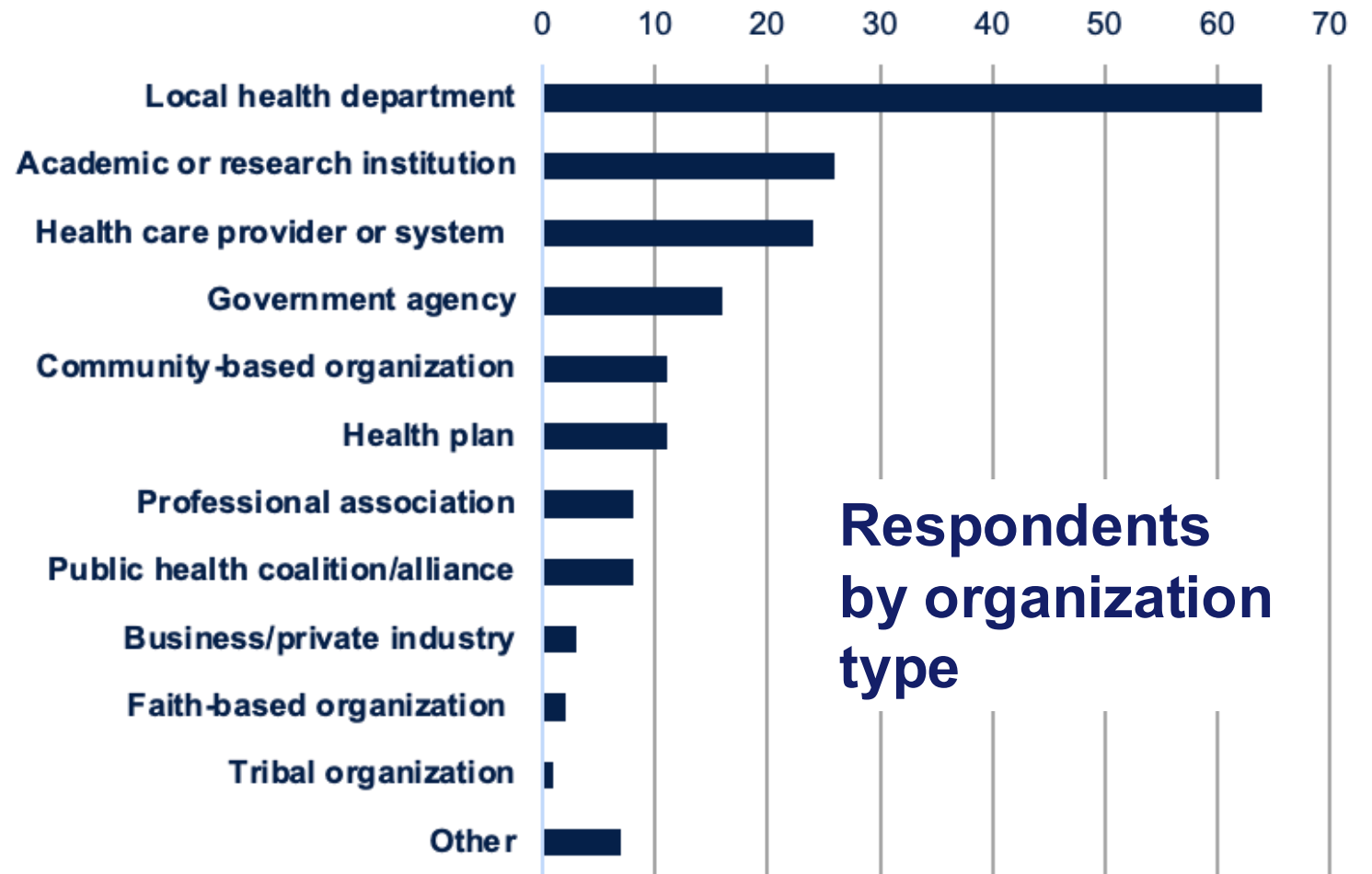
11/14/2025

Coalition Survey Results

PHACT Interest Survey Overview

(n=181)

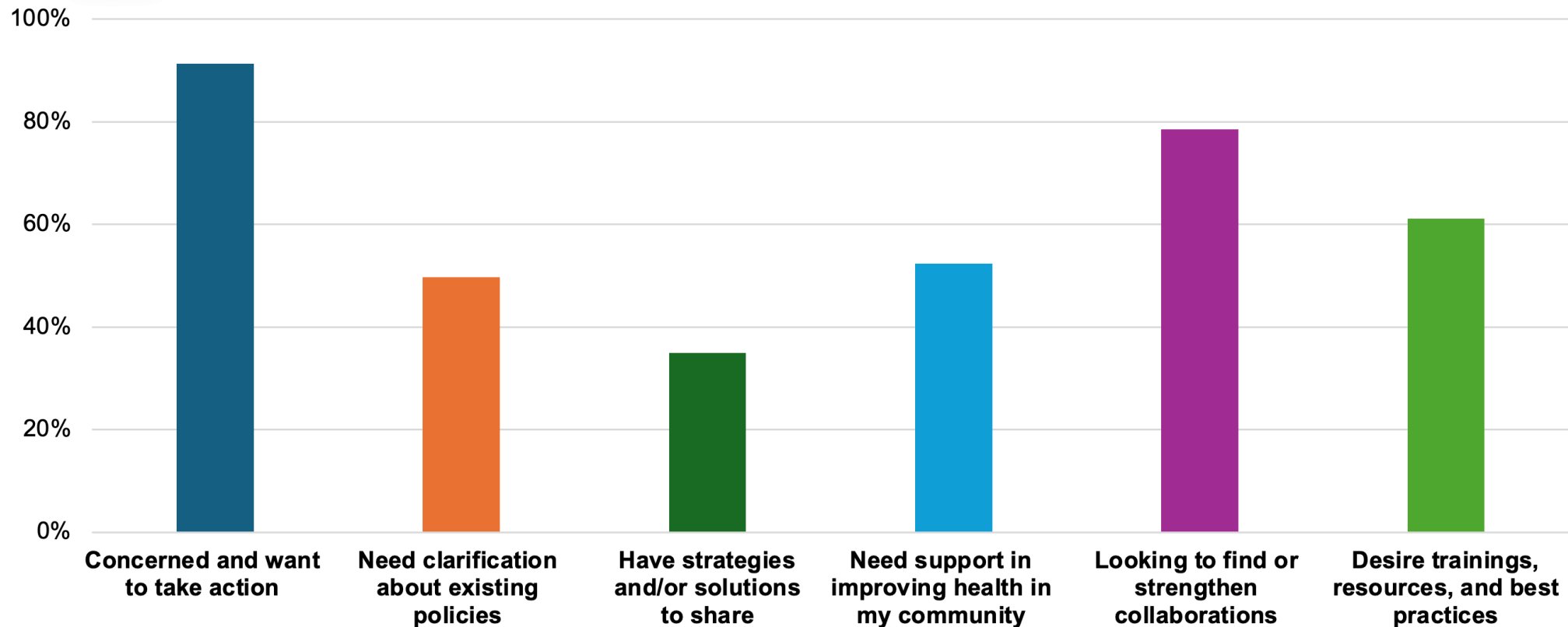
- 115+ organizations represented including 30+ county public health depts
- We're continuing to work with community, faith-based and tribal organizations to ensure representation and involvement
- Data as of 11/11/2025



**Respondents
by organization
type**

11/14/2025

What Brings Us Together: Collaboration & Action



Relative consistency across sectors and organization types

Priorities: Prevention, Equity and Social Determinants

What focus areas would you most like to see this coalition address?

Rank order 5 options

- Majority prioritized **vaccine-related issues**, but could be skewed by selection bias
- Addressing **health inequities** driven by underlying structural and **social determinants** are a priority
- Growing concern about **preventative care** guidelines, e.g. USPSTF

Weighted score	Topic area
530	Vaccine recs, access & messaging
314	Health equity
288	Preventative care guidelines & coverage
238	Social determinants of health
165	Chronic disease prevention & care
126	Maternal & child health
122	Emergency preparedness & response
112	Sexual & reproductive health
102	Behavioral health
70	Climate & health
40	Other

"Other" often used to specify: e.g., rural health; substance use disorder; medication access; water fluoridation; gender affirming care; TB

Coalition Working Group Update

Coalition Focus: Vaccines



Acceptance & Uptake

Access & Provision

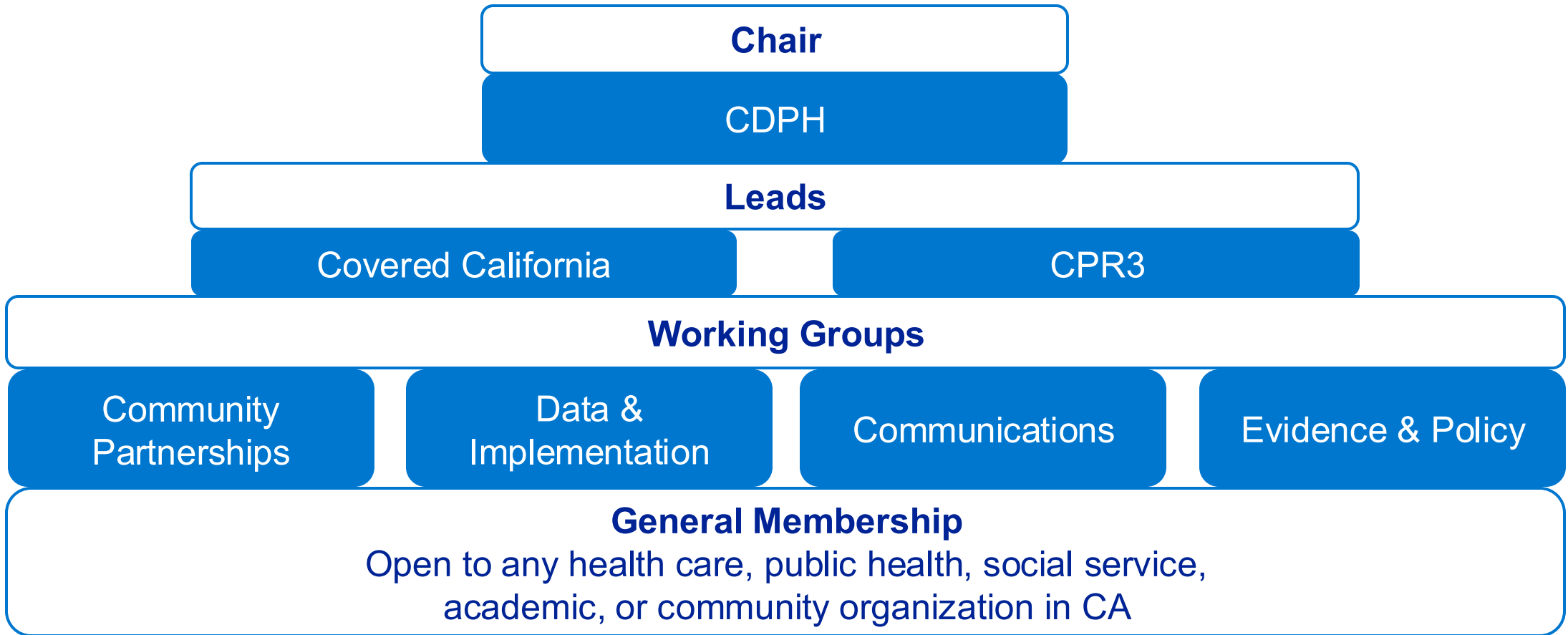
Supply Chain &
Logistics

Policy, Regulation &
Reimbursement

Interventions, messaging and best practices to support patients, communities, care teams in accessing and receiving evidence based, high quality preventive care

Policy decisions, guidelines, legislation, and payment concerns can be raised and funneled to existing responsible parties via the coalition; information from responsible parties will be shared via the coalition

PHACT Coalition Structure



Coalition Working Groups

Community Partnerships

- Embed the community voice
- Identify gaps & challenges
- Conduct needs assessment

Communications

- Develop comms plan
- Disseminate tools & resources
- Share WG findings

Data & Implementation

- Data mapping, identify hotspots
- Intervention recommendations
- Training and education

Evidence & Policy

- Track guidelines
- Review evidence
- CA Context: Global to Local

Community Partnerships



Leadership Team & Support Staff



Focus

Next Steps

Community Partnerships Working Group Update

Co-Chairs

- Melissa Stafford Jones, MPH, Public Health Institute (PHI)
- Rea Pañares, MHS, California Accountable Communities for Health Initiative (CACHI)

CDPH Liaison

- Wendy Kaplan, CDPH Office of Health Equity

Two Local Health Department Liaisons – TBA

PHACT Coalition Support Staff

- Leah Murphy, CPR3 Director of Operations & Strategy

- Integrate community perspective
- Conduct needs assessments with community partners (initial focus: respiratory vaccines)
- Identify evidence-based community strategies
- Curate & share resources across partner networks

- Identify & prioritize activities
- Identify members & send invitations
- Launch meetings

Data & Implementation



Leadership Team & Support Staff



Focus

Next Steps

Data & Implementation Working Group Update

Co-Chairs

- Ravi Kavasery, MD, Blue Shield of California
- Eric Ball, MD, FAAP, Southern Orange County Pediatric Associates

CDPH Liaison

- Amy Pine, MPH, CDPH Center for Infectious Disease, Immunization Branch

Two Local Health Department Liaisons – TBA

PHACT Coalition Support Staff

- Nicole Santos, CPR3 Director of Research


- Define critical priorities to address vaccine challenges
- Identify, curate and elevate evidence-based solutions for communities, providers and systems
- Understand relative advantage of different data assets to match hotspots with strategies/investments

- Identify & prioritize activities
- Identify members & send invitations
- Launch meetings

Landscape Analysis Identifies Potential Strategies for Health Plans to Improve Vaccine Uptake

Synthesize evidence to:

- ✓ Increase childhood immunization rates and well-child visits
- ✓ Enhance access to pediatric and adult preventive care services
- ✓ Reduce health disparities among children and vulnerable populations



Rapid landscape analysis of vaccine uptake interventions: Overview and methods

Landscape analysis overview

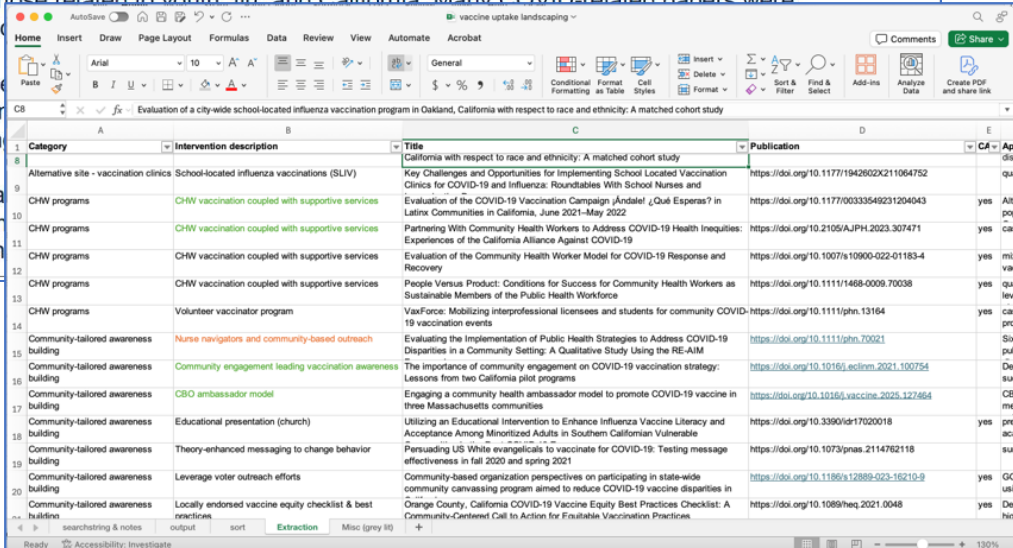
This preliminary landscape analysis was conducted to help identify interventions that health plans can implement to improve vaccine uptake at the healthcare provider, community, or system level. See methods below for important contextual information. For this initial analysis, interventions were categorized by intervention strategy, as reported in the synthesis below.

Methods

We used PubMed to identify relevant interventions aimed to increase vaccine intention, willingness or uptake, prioritizing those related to youth, flu, and California. Many COVID-related papers were included due to less

A supplemental Excel approach and key findings from the studies are of varying

Below are some examples of grey literature is n



Category	Intervention description	Title	Publication
Alternative site - vaccination clinics	School-located influenza vaccinations (SLIV)	California with respect to race and ethnicity: A matched cohort study	Key Challenges and Opportunities for Implementing School Located Vaccination Clinics for COVID-19 and Influenza: Roundtables With School Nurses and Evaluation of the COVID-19 Vaccination Campaign ¿Qué Espensas? in Latinx Communities in California, June 2021-May 2022
CHW programs	CHW vaccination coupled with supportive services	Partnership With Community Health Workers to Address COVID-19 Health Inequities: Experiences of the California Alliance Against COVID-19	Evaluation of the Community Health Worker Model for COVID-19 Response and Recovery
CHW programs	CHW vaccination coupled with supportive services	People Versus Product: Conditions for Success for Community Health Workers as Sustainable Members of the Public Health Workforce	VaxForce: Mobilizing Interprofessional Licensees and students for community COVID-19 vaccination events
CHW programs	Volunteer vaccinator program	Evaluating the Implementation of Public Health Strategies to Address COVID-19 Disparities in a Community Setting: A Qualitative Study Using the RE-AIM	The importance of community engagement on COVID-19 vaccination strategy: Lessons from two California pilot programs
Community-tailored awareness building	Nurse navigators and community-based outreach	Engaging a community health ambassador model to promote COVID-19 vaccine in three Massachusetts communities	Utilizing an Educational Intervention to Enhance Influenza Vaccine Literacy and Acceptance Among Minoritized Adults in Southern Californian Vulnerable
Community-tailored awareness building	Community engagement leading vaccination awareness	Persuading US White evangelicals to vaccinate for COVID-19: Testing message effectiveness in fall 2020 and spring 2021	Community-based organization perspectives on participating in state-wide community canvassing program aimed to reduce COVID-19 vaccine disparities in Orange County, California COVID-19 Vaccine Equity Best Practices Checklist: A Community-Centered Call to Action for Feasible Vaccination Practices
Community-tailored awareness building	CBO ambassador model		
Community-tailored awareness building	Educational presentation (church)		
Community-tailored awareness building	Theory-enhanced messaging to change behavior		
Community-tailored awareness building	Leverage voter outreach efforts		
Community-tailored awareness building	Locally endorsed vaccine equity checklist & best practices		

Next Steps

The background of the slide is composed of several overlapping triangles in two shades of blue. A large, dark blue triangle points towards the right side of the frame. Overlapping this and extending towards the right edge are several lighter blue triangles. Thin, dark blue lines radiate from a point on the right edge, creating a star-like or web-like pattern that intersects with the larger triangular shapes.

More to Come

Communications Working Group

- Review, curate, and generate tools and resources
- Develop dissemination strategy
- Create process for "bidirectional" communications
- Provide communications support for other WGs

Co-chairs, members, activities still TBD

Evidence & Policy Working Group

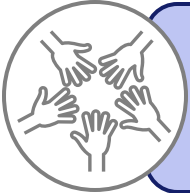
- To be launched in 2026

Co-chairs, members, activities still TBD

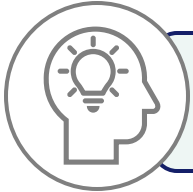
Coalition Resources

- Clinician Primers
- Standing Order Templates
- Landscape Analysis
- Child Vaccination Overview

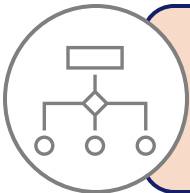
Coalition Engagement Opportunities



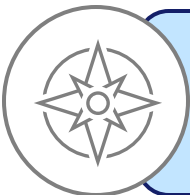
Thank you to those who filled out the survey. Your contact info will be forwarded to Working Group leads.



Email CPR3@ucsf.edu to send us your vaccine tools & resources.



Go to cpr3.ucsf.edu/phact to register for updates and share with a friend or colleague to sign up, too!



Coming soon: A Working Group sign-up form will be added to the cpr3.ucsf.edu/phact website. We'll let you know when it's up!

Visit the PHACT Coalition webpage

University of California San Francisco

UCSF Health

Search UCSF

About UCSF

Give to UCSF



Search...

About ▼

Partnerships ▼

Research ▼

Data ▼

News ▼

[Home](#) > PHACT Coalition

cpr3.ucsf.edu/phact

on: Collaborating to protect
the health of our communities



About the PHACT Coalition

The Public Health for All Californians Together (PHACT) Coalition was launched on September 26, 2025, to bring together a network of multi-sectoral partners across the state of California to provide timely, evidence-based guidelines and culturally appropriate health messaging to protect the health and advance the well-being of all Californians.

The Coalition is led by the California Department of Public Health (CDPH), with support from Covered California and UCSF's Collaborative for Public Health Research (CPR3).

PHACT Coalition Objectives

This Coalition connects leaders and organizations throughout the state who are committed to improving
Confidential - Low

CDPH Public Health for All

Bookmark the CDPH Public Health for All page for evidence-based public health recommendations and resources.

PUBLIC HEALTH FOR ALL

11/14/2025



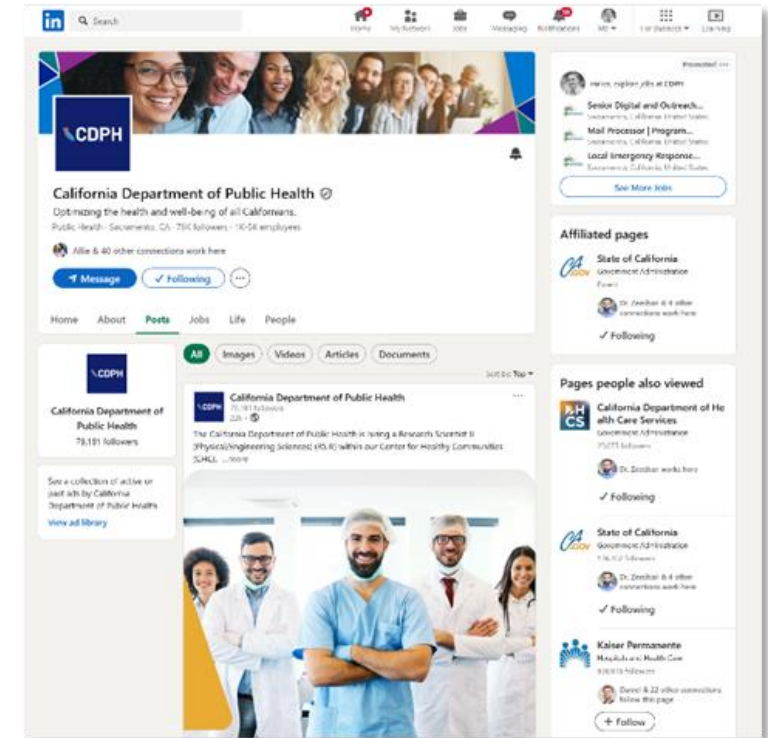
Sign Up for CDPH Newsletters & Webinars

Resources for Communicators

- [CDPH Comms Weekly Newsletter](#)
- [CDPH News Releases](#)
- [CDPH Policy & Web Updates](#)

Resources for Clinicians & Providers

- [CDPH Immunization Branch Newsletter](#)
- [Sign up for CDPH Immunization Webinar Series](#)



Follow CDPH on Social Media



Facebook: [@CAPublicHealth](https://www.facebook.com/CAPublicHealth)



Instagram: [@CAPublicHealth](https://www.instagram.com/CAPublicHealth)



X: [@CAPublicHealth](https://twitter.com/CAPublicHealth)



LinkedIn: [California Department of Public Health](https://www.linkedin.com/company/california-department-of-public-health)



YouTube: [CA Public Health - YouTube](https://www.youtube.com/channel/UCaPbUcHtHtHtHtHtHtHtHtHt)



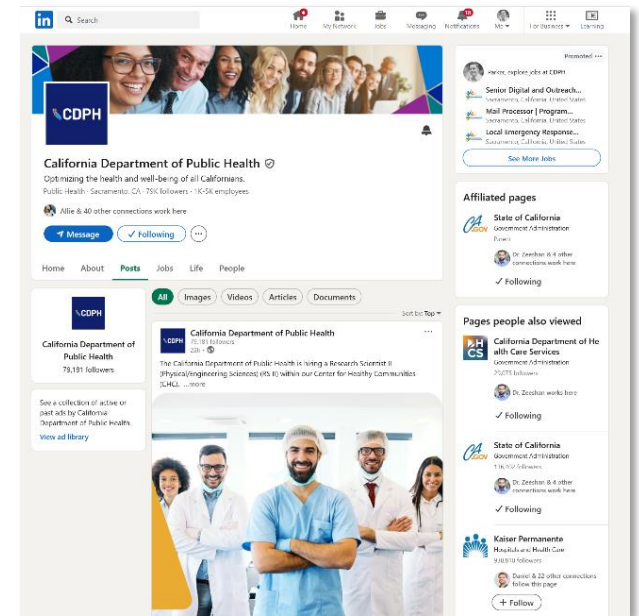
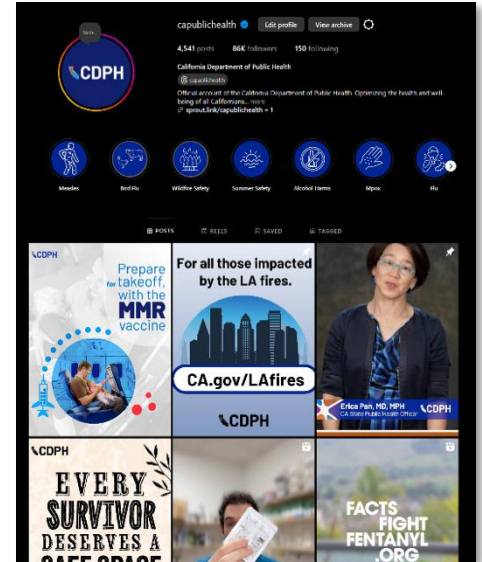
Threads: [@CAPublicHealth](https://www.threads.net/@CAPublicHealth)



BlueSky: [@capublichealth.bsky.social](https://bsky.app/profile/capublichealth.bsky.social)



TikTok: [@capublichealth](https://www.tiktok.com/@capublichealth) - NEW!





CDPH

California Department of
Public Health

Collaborative for
Public Health Research



University of California
San Francisco